

# Multiport Swivel

- for hydraulic and pneumatic applications

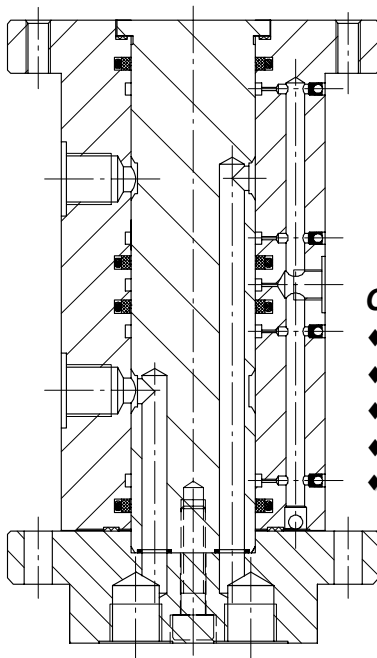
Swivels are used where rotating hydraulic or pneumatic drive units are installed (for example continuously adjustable belt drives, turn tables, windpower and hydropower stations etc.).

We manufacture and develop multiport swivels for your individual application. Our extensive portfolio of manufactured multiport swivels with various bearing and seal arrangements allows us to offer the best fitting configurations for almost any application.

Most important design criteria for the inner configuration are the type of fluid, operating pressure, rotational speed, temperature and flow rate. The installation method and the types of fluid ports required define the outside design.

## Technical limits:

Operating pressure: up to 500 bar  
Rotational speed: up to 5000 min<sup>-1</sup>  
Temperature: -20°C bis 120°C  
Flow rate: bis 240 l/min  
Dry run conditional

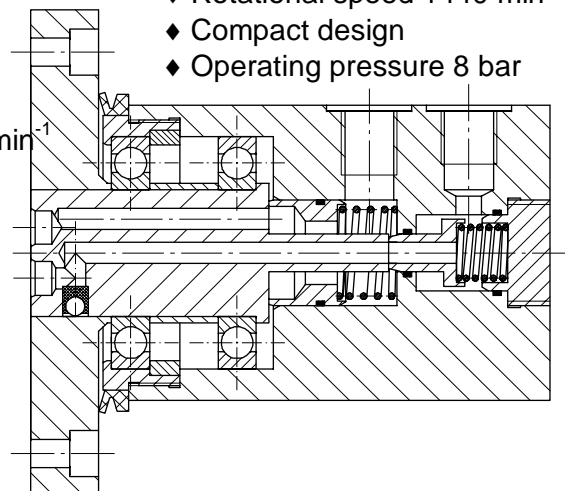


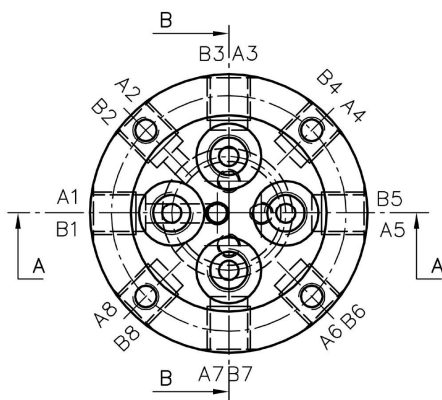
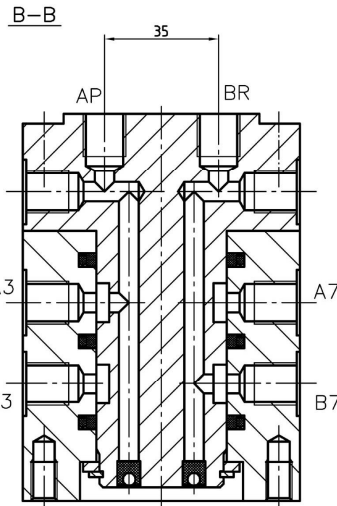
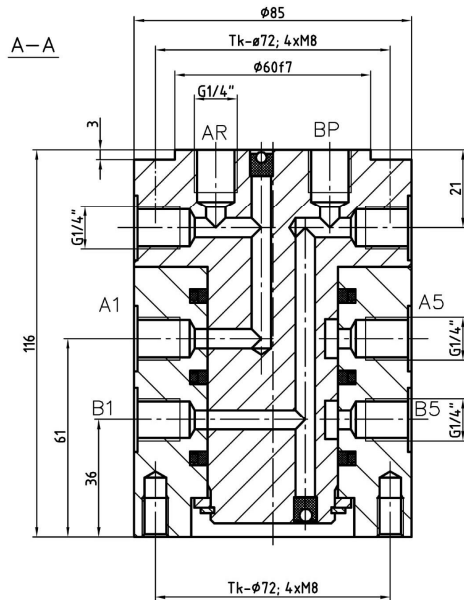
### Characteristics Example 1:

- ◆ 2-way swivel
- ◆ Operating fluid HLP-mineral oil
- ◆ Rotational speed less than 60 min<sup>-1</sup>
- ◆ Defined bleed oil return
- ◆ Transfer of high pressures

### Characteristics Example 2:

- ◆ 2-way swivel
- ◆ Operating fluid dry air
- ◆ Rotational speed 1440 min<sup>-1</sup>
- ◆ Compact design
- ◆ Operating pressure 8 bar





### Characteristics Example 3:

- ◆ Controlled 2-way swivel for double acting cylinders for installation on turntable with 8 stations (1x loading and unloading station)
- ◆ Compact design
- ◆ Max. operating pressure 500 bar

### Type designation Multiport Swivel

H: Hydraulic P: Pneumatic	
DD: Swivel	
Maximum operating pressure in bar	
Number of channels	
Port size: 18 = G <sup>1</sup> / <sub>8</sub> " 14 = G <sup>1</sup> / <sub>4</sub> " 38 = G <sup>3</sup> / <sub>8</sub> " ...	
Rotational speed in min <sup>-1</sup>	
Only with HDD: 1 = mineral oil 2 = fire resistant fluids 3 = water	
X: special characteristics, please describe with order (for example connecting diagram per drawing etc.)	

**H DD 250 - 2 x 14 / 3000 - 1 . X**

MANAGEMENTSYSTEM



DQS-zertifiziert nach  
DIN EN ISO 9001



Reg.-Nr. 4744-01