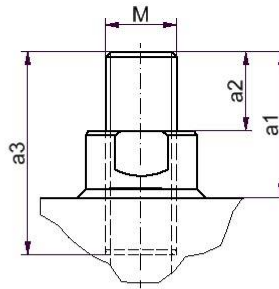
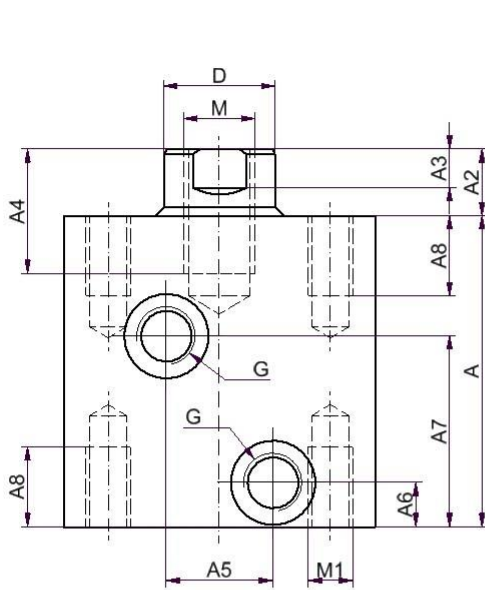
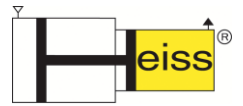
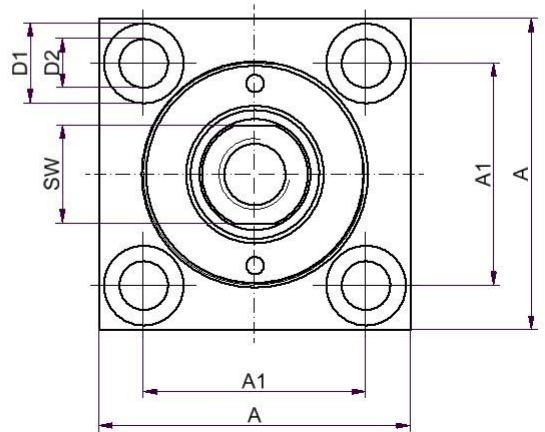
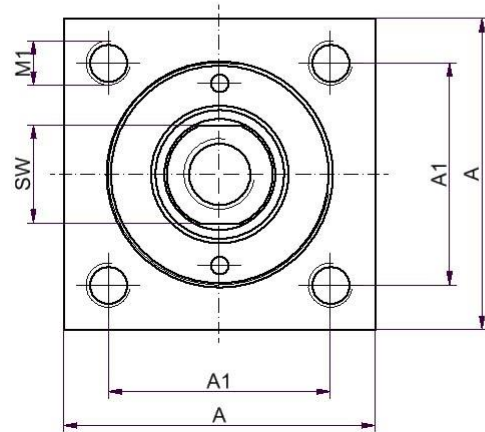
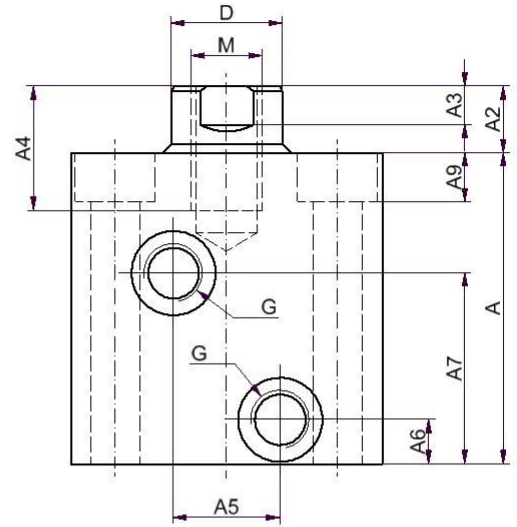


Hydraulic Cube Cylinder HWZ 400



Piston rod end X1
With inserted
threaded pin



Configuration A

Threaded blind holes on both sides

Configuration B

Through holes countersunk on rod side
for cylinder head bolts acc. to DIN 912

For installation of the Hydraulic Cube Cylinder HWZ 400 use only bolts per DIN912 and strength category 12.9.

Piston-ø	D	Stroke	D1	D2	D3	A	A1	A2	A3	A4	A5	A6	A7	A8	A9	G	M	M1	SW
16	10	6	10	5,5	14	40	28	8	3	10	10	7,5	22	10	6	G1/8"	M6	M5	8
20	12	8	10	5,5	18	45	33	10	3	12	14	7,5	26	10	6	G1/8"	M8	M5	10
25	16	10	11	6,5	22	50	36	12	4	15	16	7,5	27	10	6,5	G1/8"	M10	M6	14
32	20	15	14,5	9	26	60	42	12	7	18	16	10	38	15	9	G1/4"	M12	M8	17
40	25	15	17,5	11	33	70	50	15	7	28	25	10	43	18	11	G1/4"	M16	M10	22
50	32	15	20	14	42	80	58	20	8	30	26	10	50	18	13	G1/4"	M20	M12	27
63	40	20	26	18	47	100	70	25	10	30	26	12	62	25	17,5	G3/8"	M24	M16	36
80	50	25	26	18	58	110	82	30	12	40	36	15	70	25	17,5	G3/8"	M30	M16	48
100	60	35	33	23	70	135	100	40	15	45	40	15	85	30	21,5	G1/2"	M36	M20	50

Piston-ø	16	20	25	32	40	50	63	80	100
a1	17	19	26	28	37	48	53	60	75
a2	9	9	14	16	22	28	28	30	35
a3	20	20	30	35	50	60	60	70	80

Piston rod end X1
with inserted threaded pin,
starting at M20 piston rod
with male thread

Design subject to change

Revision B * 09.04.13