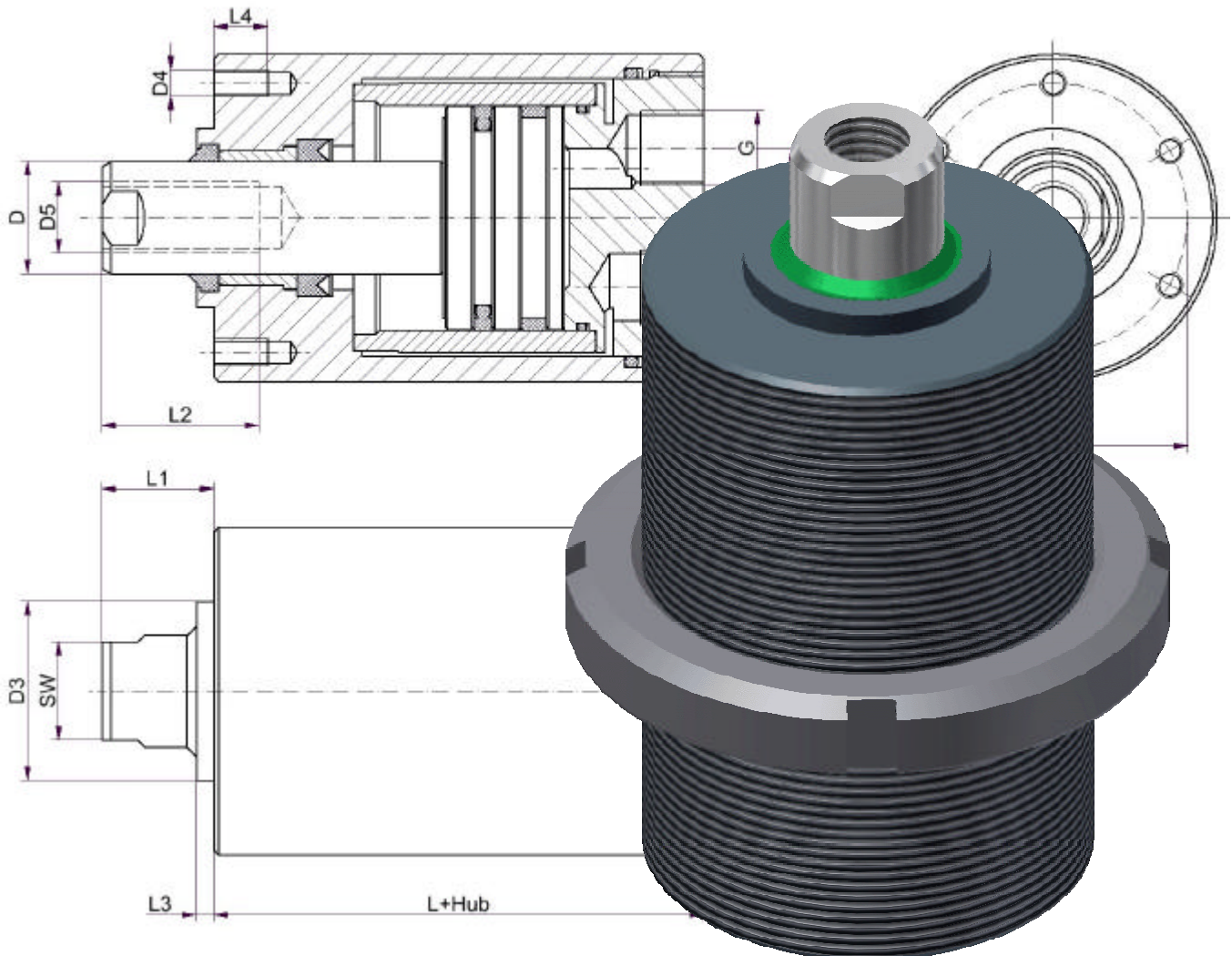
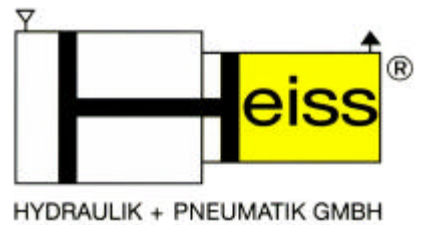


Hydraulic Kompakt Cylinder HKZ 160



- Maximum operating pressure up to 160 bar with smallest installation dimensions

- Choice of 6 different piston sizes and various attachments

- Hydraulic ports on bottom face

- Seal arrangement for easy service

- Available for use with water

- Seal groove and diameter according to ISO 5597/1 and DIN ISO 7425/1

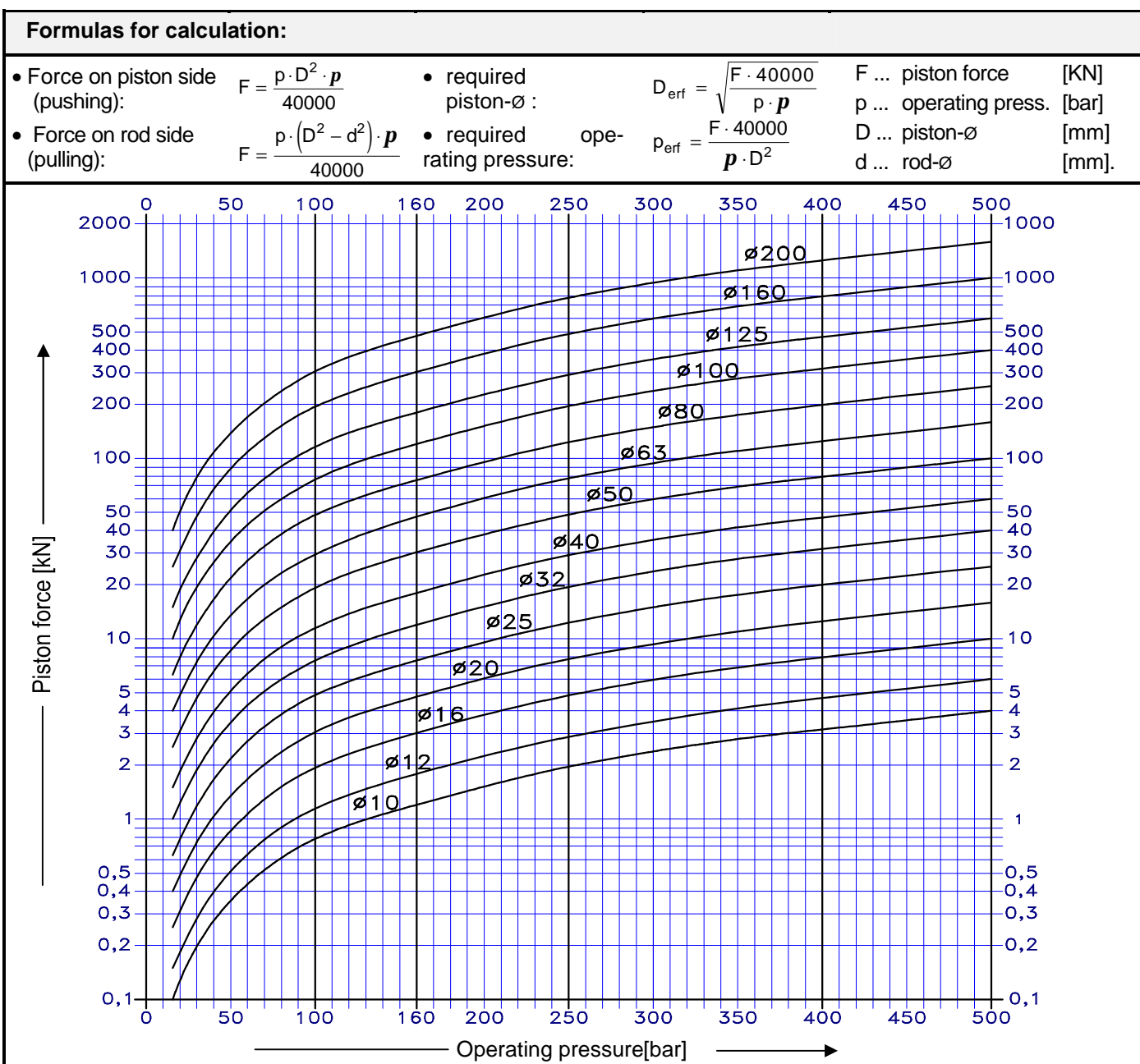
Hydraulic Kompakt Cylinder HKZ 160



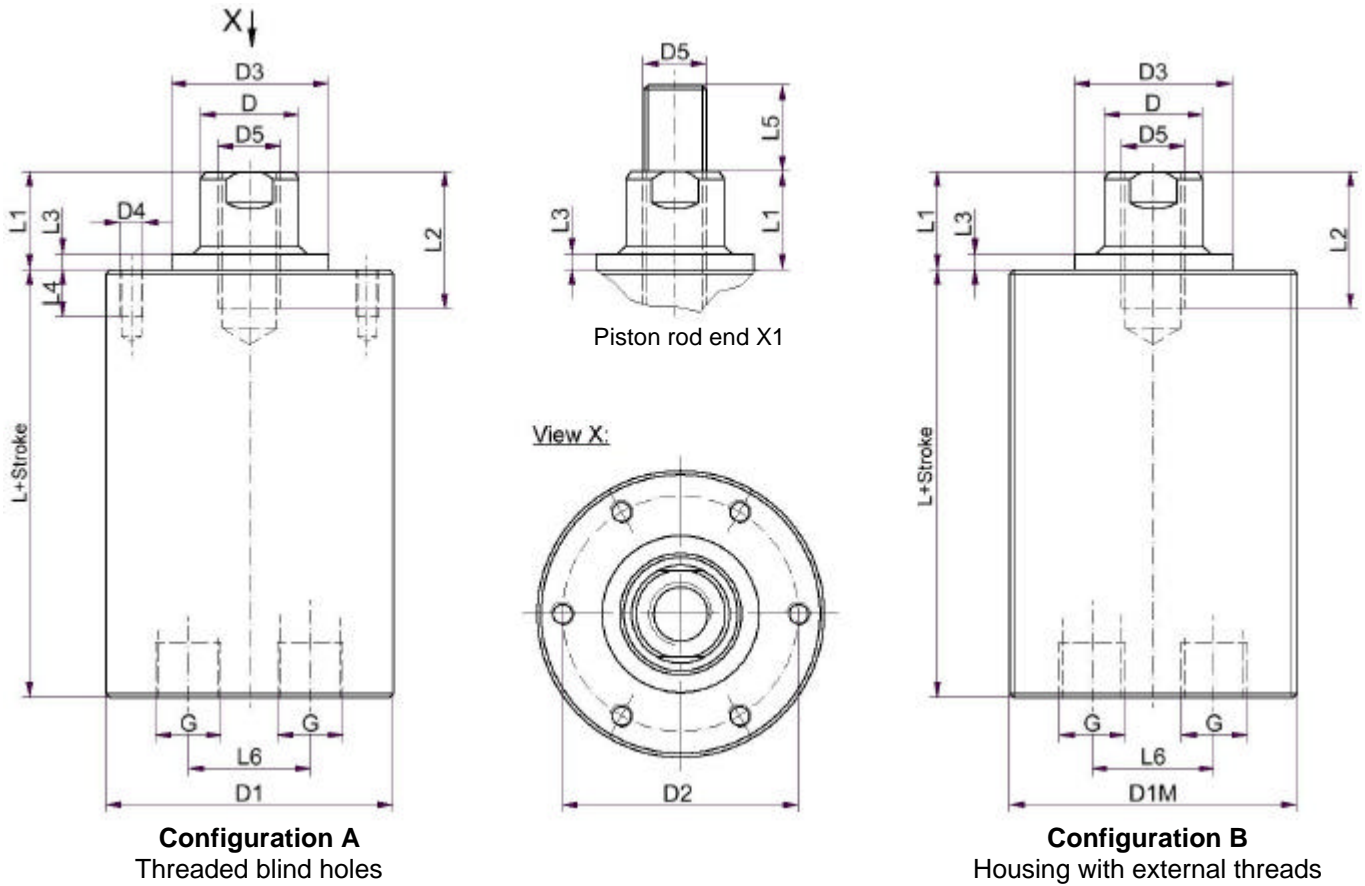
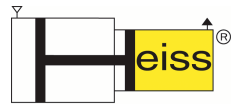
Operating Conditions

- Operating pressure:** 160 bar, please contact us for higher operating pressures.
- Operating fluids:** Hydraulic oils on the basis of mineral oils, for example H, HL, HLP-oils perDIN 51524/51525. Other operating fluids like fire resisting fluids or water may be used upon request.
- Operating temperature:** By default the Hydraulic Rotational Drive Cylinder is equipped with seals for a temperature range from -20°C to +80°C. High temperature resistant seals can be fitted without changes in design. If required please add order-index "X6" when ordering (see special designs – type designations).
- Piston travel speed:** Maximum 0,5 m/s, please contact us for higher speeds.
- Cylinder stroke:** The strokes as listed in the table can be limited to any length by installation of a bushing. The Hydraulic Compact Cylinders HKZ 160 are also available with larger strokes (see order-index "Xo" in the type designation section)
- Special designs:** The most common special equipment with the related order-index "X" is mentioned in the type designation section.
Additional piston sizes upon request.

Piston force diagram:

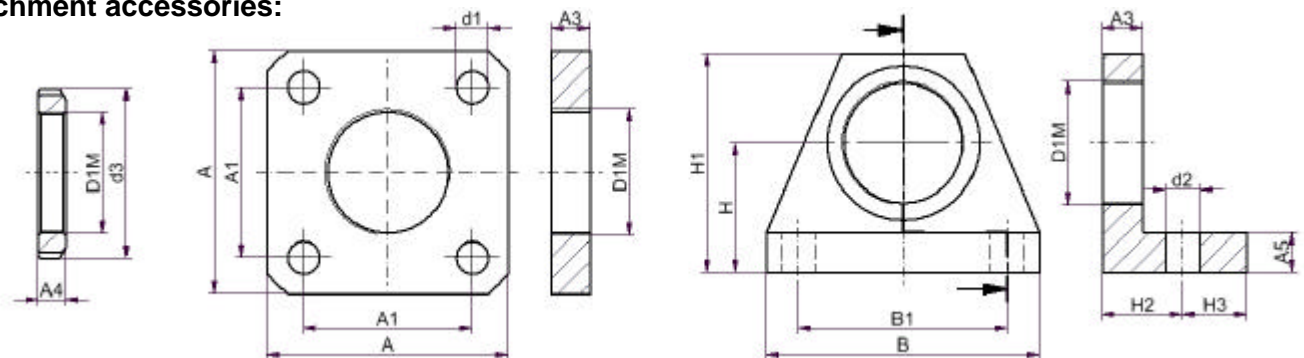


Hydraulic Kompakt Cylinder HKZ 160



Piston-ø	D	Nom. stroke	L	G	D1	D1M	D2	D3 f7	D4	D5	L1	L2	L3	L4	L5	L6
25	12	10	55	G1/8"	42	M42x1,5	32	25	M4	M8	10	15	3	7	15	18
32	16	15	65	G1/4"	52	M52x2	40	30	M5	M10	12	15	3	8	20	24
40	20	15	75	G1/4"	65	M65x2	50	36	M6	M12	15	20	3	10	22	28
50	25	20	89	G3/8"	75	M75x2	60	40	M6	M16	20	25	4	12	25	31
63	32	20	106	G3/8"	95	M95x2	73	50	M8	M20	25	30	5	14	30	43
80	40	20	155	G1/2"	120	M120x2	80	60	M10	M24	25	30	5	20	40	60

Attachment accessories:



Grooved nut Order.No.98

Rect.-flange Oder.No.112

Angled foot Order.No.113

Piston-ø	A	A1	A3	A4	A5	B	B1	H	H1	H2	H3	d1	d2	d3	Piston rod end X1 With inserted threaded pin, starting at M20 piston rod with male thread
25	90	62	14	9	10	100	70	38	68	30	20	11	13	58	
32	100	70	16	11	12	120	85	50	80	35	25	13	17,5	70	
40	110	80	20	12	20	135	100	60	95	40	30	13	17,5	85	
50	130	96	25	13	25	170	130	75	120	50	35	17,5	21,5	98	
63	150	115	35	17	30	215	165	90	140	60	40	17,5	21,5	125	
80	160	125	35	20	35	230	180	105	165	70	55	17,5	26	155	

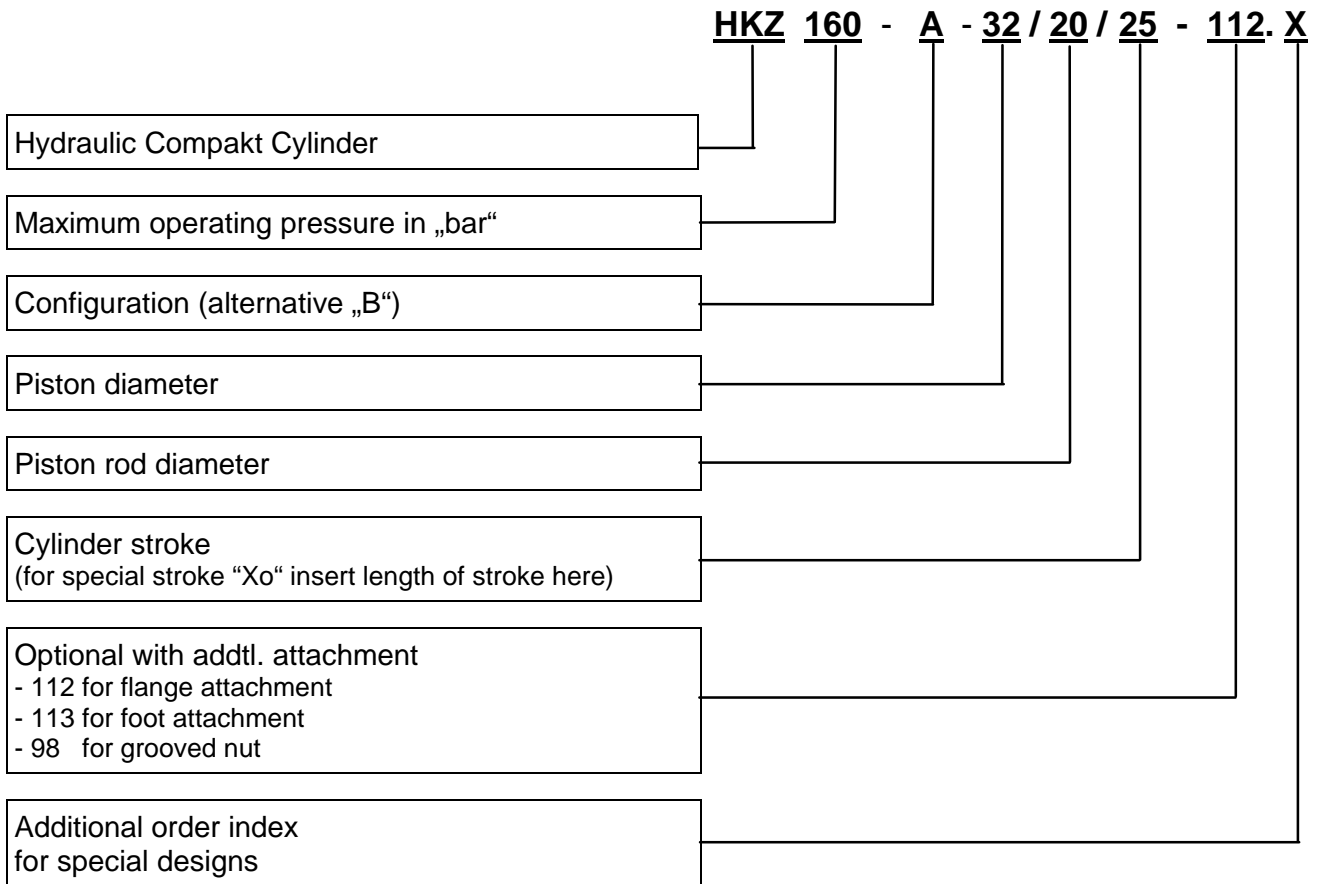
Design subject to change

Revision B * 11.04.13

Hydraulic Kompakt Cylinder HKZ 160



Type Designation



Special designs:

- Xo = Special stroke
- X1 = Inserted threaded pin
- X2 = Piston rod end per customer request or customers drawing
- X3 = Enlarged piston rod-ø
- X4 = Reduced piston rod -ø
- X5 = Continuous piston rod (nondifferential cylinder)
- X6 = Heat resistant seals up to 200°C for example Viton
- X7 = End-of-stroke damper
- X8 = Enlarged or reduced port sizes
- X9 = Additional vent plugs
- X10 = Corrosion resistant for operation with water
- X11 = With inductive proximity switches for end-of-stroke sensing
- X12 = Miscellaneous

For ordering cylinder wear part kits please indicate the type designation and the commission number imprinted on the cylinder.

Please consider our additional product range:

Hydraulic rotational drive cylinder	HDZ 120	Hydraulic cube cylinder	HWZ 400
Swing clamp cylinder	SSZ 250	Hydraulic block cylinder	HBZ 500
Booster cylinder	PHU / HHU	Hydraulic short stroke cylinder	HKZ 500
Standard cylinder series	SZ100, SZ160, SZ250 and SNZ DIN 24554		

As well as booster cylinders up to 5000 bar, cylinder strips and hydromechanical clamping units, special purpose cylinders with piston diameters up to 500 mm and strokes up to 8000 mm.